

elbo controlli  **NIKKEN**

GLOBAL STRATEGIC PARTNERSHIP

E46LTW

4 CAMERAS

TOOL PRESSETTER



rock solid measurement

E46LTW 4 CAMERAS

The ideal solution for micro tooling



The E46LTW presetter machine, already equipped with 3 cameras, has been added the fourth camera with 90X magnification to measure, inspect and certify micro tools.

Thanks to an high precision and accuracy level of measurement, E46LTW is used for dental industry, watch industry, medical and not only.

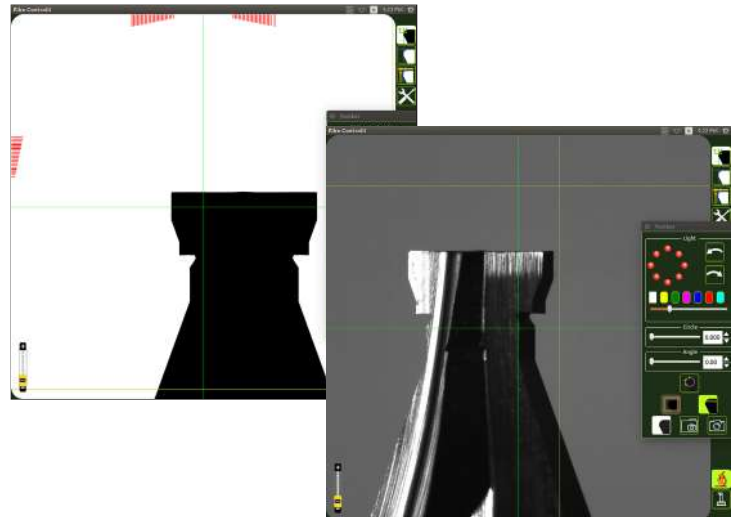
Unique, intuitive and easy to use make the micro tools measurement operation simple and reliable.

First front camera allows to measure and inspect tools with 26X magnification with the possibility to have 2X and 4X digital zoom.
Maximum tool diameter measurable: 210 mm.

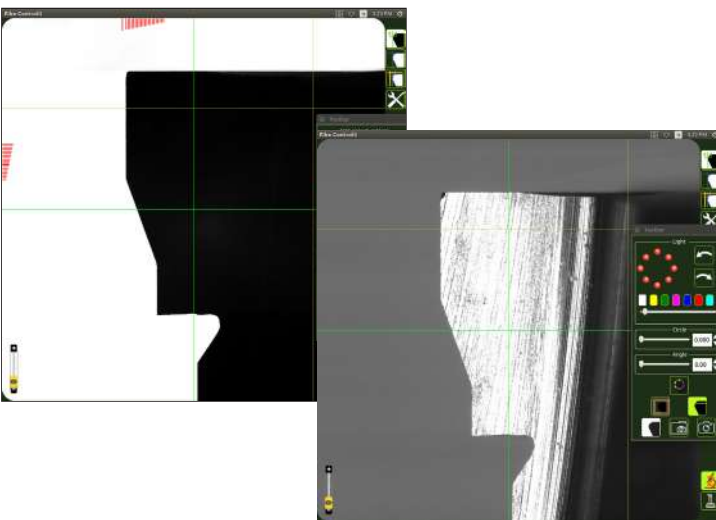
The measuring frame is about 10 X 10 mm in order to have a clear and accurate visualization.
The complete tool visualization facilitates the DXF profile realization in one time.

The diascopic/episcopic function allows to verify the wear and the grinded surface of the tools.
The machine operator is able to measure any tool type easily.

Measure and inspection with 26X zoom camera



Measure and inspection with 90X zoom camera



Second front camera (4 camera) allows to have a 90X magnification, ensuring a very small diameter tool visualization.

Maximum tool diameter measurable: 120 mm.

The measuring frame is about 2,8 X 2,8 mm: the high quality image and the increased zoom allow to carry out accurate measure despite the small tool dimensions.

camera*	measuring frame	D max measurable	zoom
1 D/E	10 X 10 mm	260 mm	26X
2 E	4 X 4 mm	120 mm	63X
3 E	4 X 4 mm	120 mm	63X
4 D/E	2,8 X 2,8 mm	120 mm	90X

*D = Diascopic E = Episcopic

20821 MEDA (MB) - Italy - Via San Giorgio, 21
T. +39 0362 342745 - F. +39 0362 342741
www.elbocontrolli.com - info@elbocontrolli.it

elbo controllii  NIKKEN