



PreSet 3D CNC

Presetting, series measurements

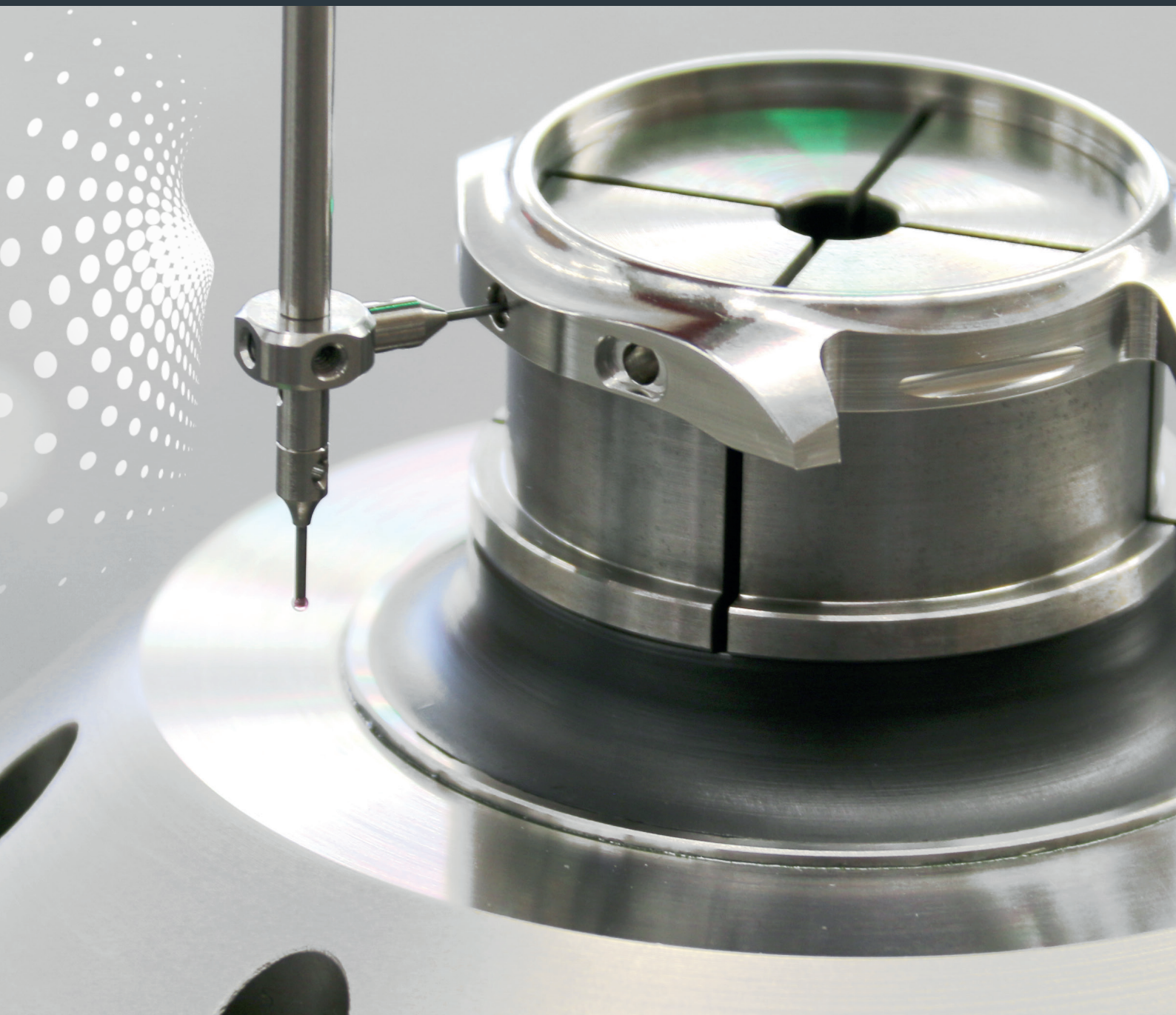


You'll gain 600 more productive hours annually

Setup and preparation in parallel with primary production time is becoming increasingly important.

Throughput times of products need to be continuously reduced.

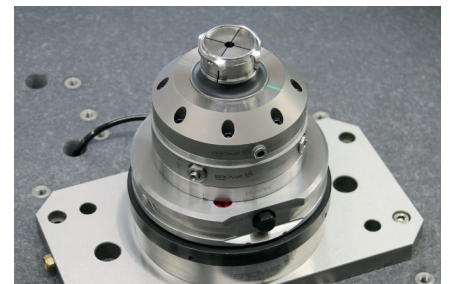
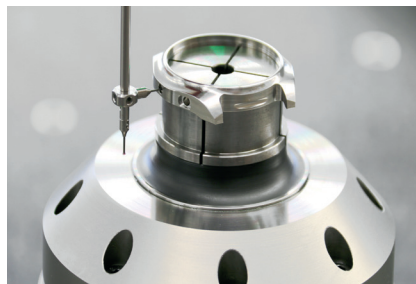
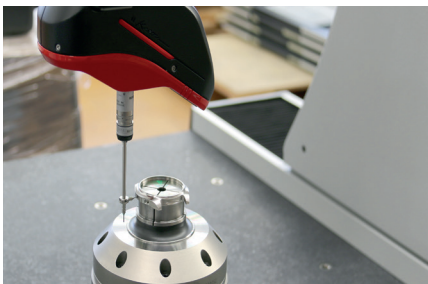
Only systems that are utilized to full capacity increase the productivity of the company.





Workpieces are mounted two to three times until their machining process is completed. Every conversion takes time. Productive time is lost while the machine is being set up.

CNC machines save you 10 minutes of alignment time per workpiece.



Easy, intuitive operation thanks to optimal joystick control.

THE FACTS

The setup and presetting station pays for itself in just 2 years

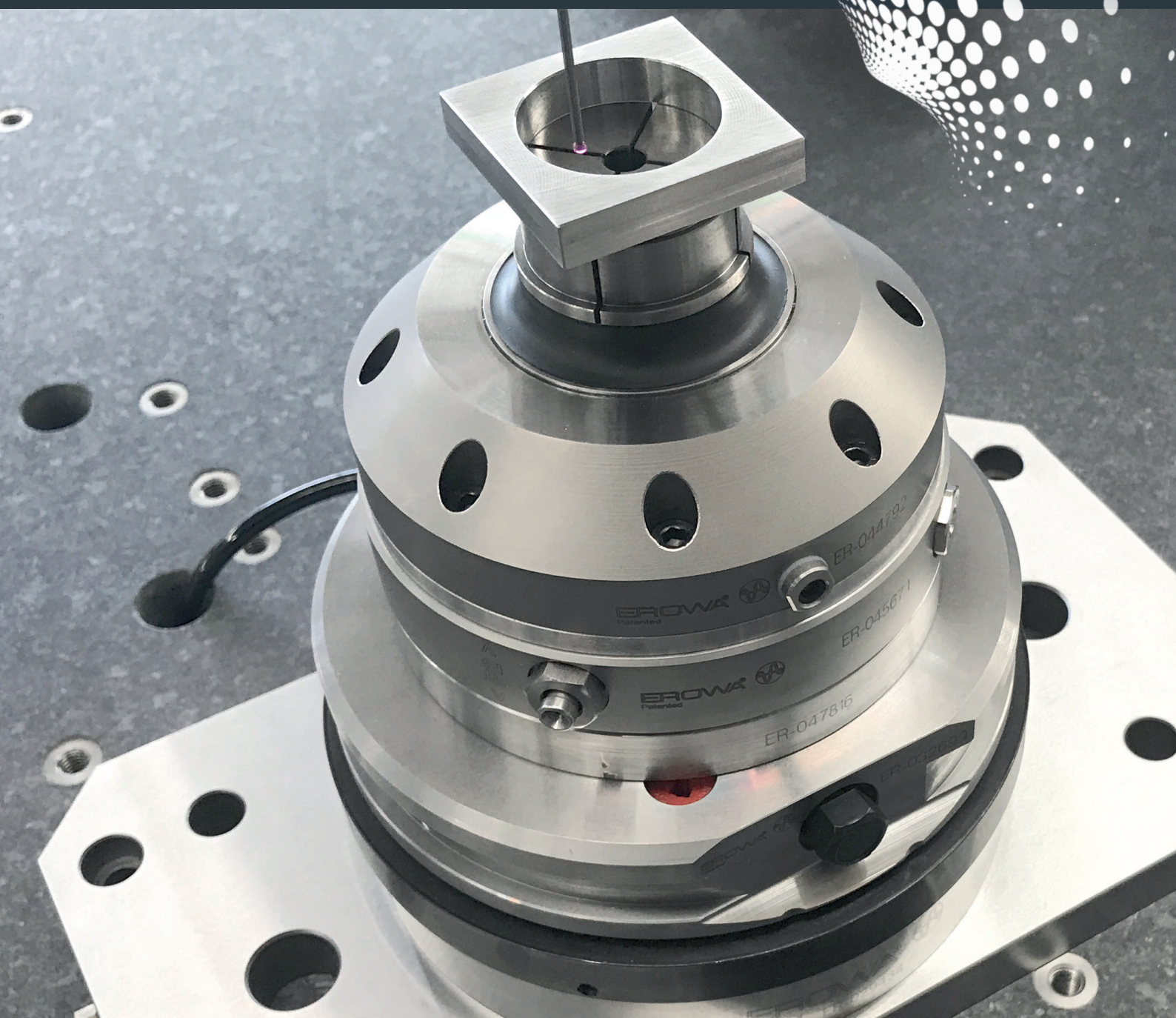
Production quality improves significantly

Throughput times are shorter

Operators benefit from easy-to-follow operator guidance

Easy and fast presetting

The setup cell is provided with some extremely user-friendly softwares. Macros are selected visually. The graphical user interface helps the operator carry out the measuring cycles correctly.



THE FACTS

- Animated PreSet programs
- Integrated hole pattern for mounting of EROWA chucks
- Comprehensive software packages for presetting, quality measurement and automation
- Prepared for automation
- Reliable workpiece recognition with EWIST™
- Temperature control



01 | Rails

High-precision Renishaw rails with optical probes ensure excellent results. Renishaw probe systems For top quality and unmatched flexibility.

02 | Machine structure

Special aluminum casting for best dimensional and temperature stability.

03 | Natural granite

The high-precision worktop made of black granite forms the base of all EROWA tooling systems that can be set up. The mounting holes are prepared.

04 | Joystick control

Optimal operation for accurate measurements. One control lever for all axes.

Software

With the EROWA presetting software, presetting data can be collected very simply and with graphic support.

Tooling system operation

All systems can be opened using simple rocker levers.

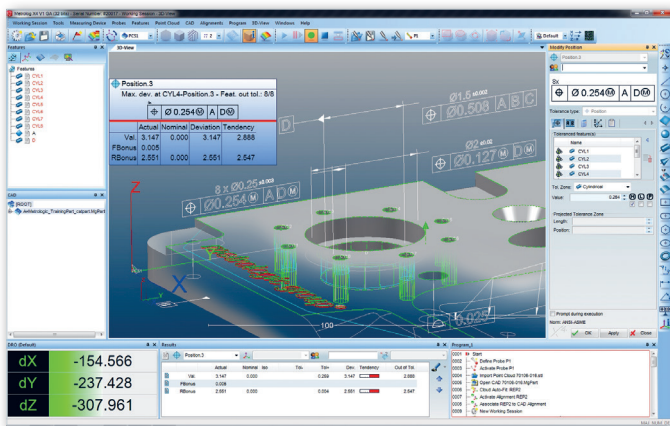
Motorized axes

All axes are driven by DC servo motors.

Quality measurements

Importing - Measuring - Comparing - Reporting.

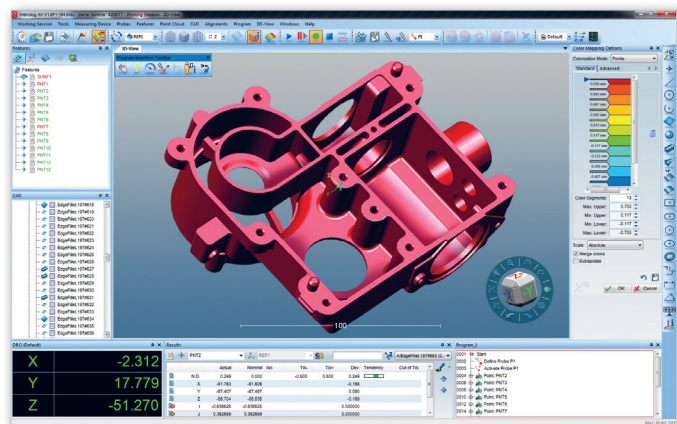




Complete integration of ISO & ASME geometric dimensioning and tolerancing (GD&T).



- Easy-to-operate graphic user surface, completely adaptable to operator requirements and in keeping with individual machine types and measuring methods.
- New assistant for manual measurements.
- Automatic adaptation of the display during point recording.
- Adaptable information windows.



Simple CAD import function which is also able to process large data sets without any problems.



MetrologX⁴ is 32- and 64-bit enabled and thus optimally prepared for the future.

FACTS

Optimal user surface for outstanding ease of operation

Increase in efficiency through top-level flexibility and functionality

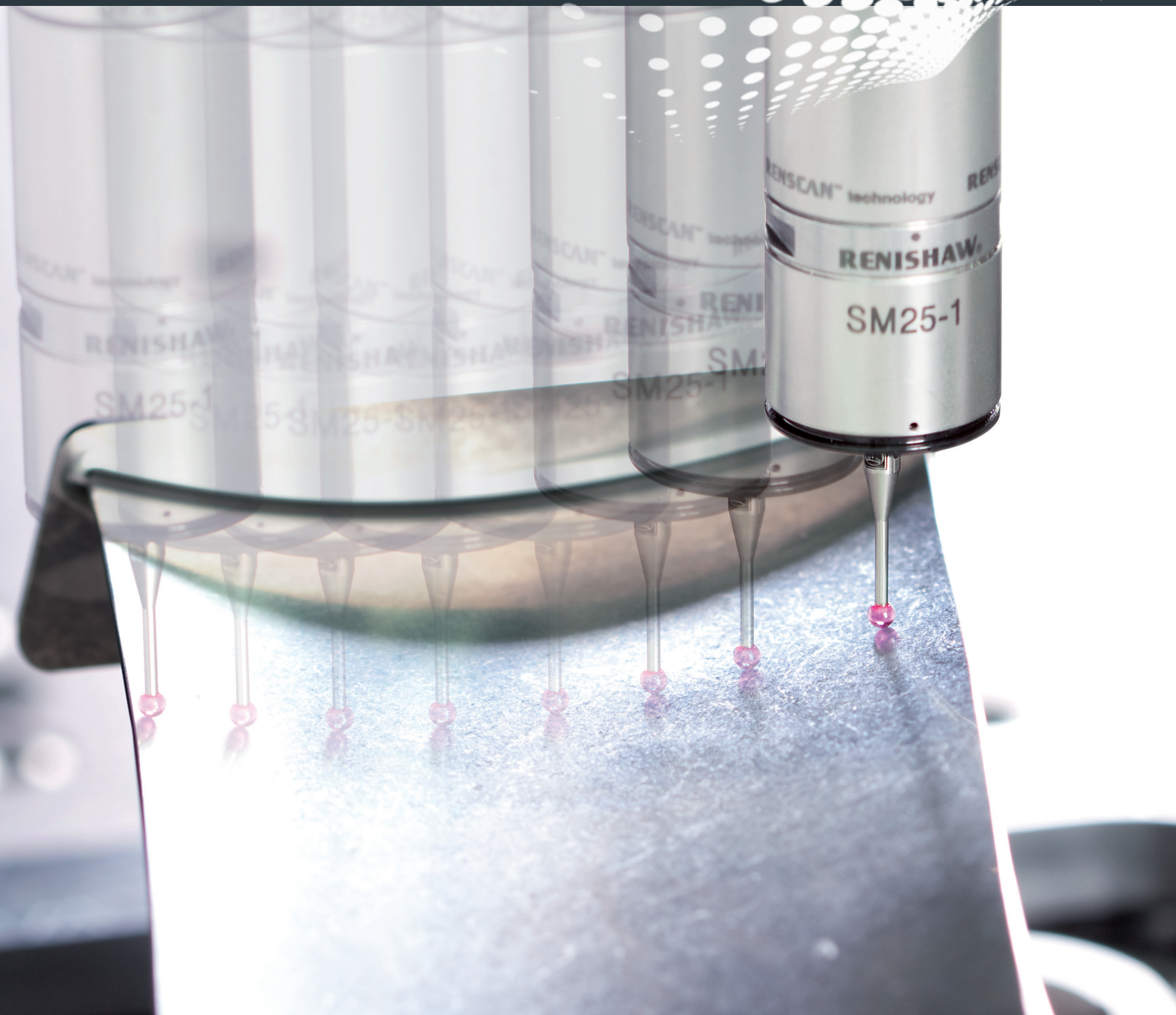
Unsurpassed compatibility with tactile and optical measuring systems

High performance capacity even with large data volumes

Direct selection from among 18 different languages

Scanning with quality

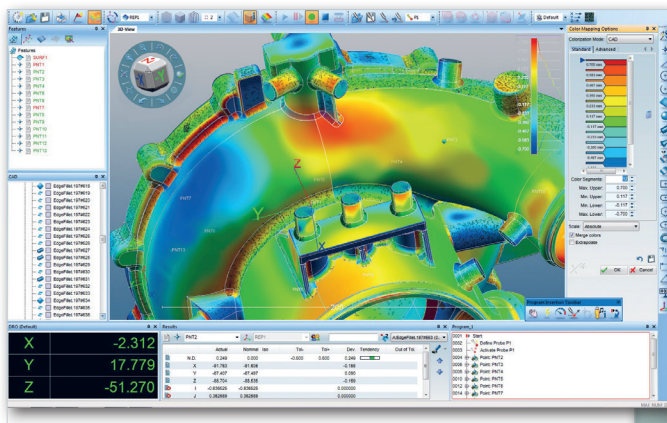
High-precision shape and profile capturing.



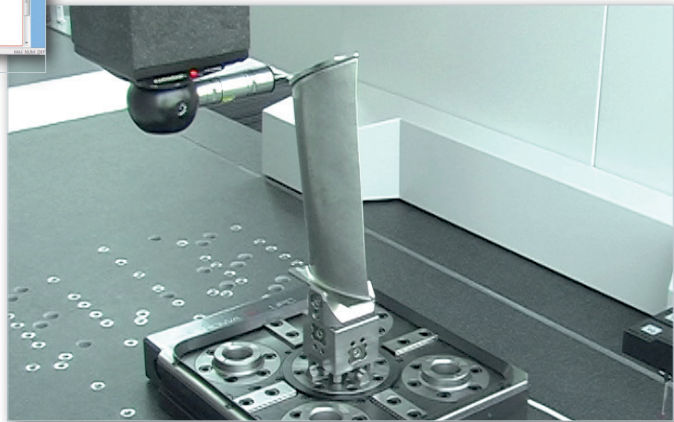


During "normal measuring", only individual points are measured. With scanning, large data volumes are captured. This results in substantially more detailed information about the form and shape of the workpiece.

Scanning is used when free-form geometries have to be captured and checked within a short period of time or when great demands are made on the evaluation of shape deviations.



Easy-to-view color-coded representation (color mapping) for an intuitive inspection of dimensional accuracy.



Personal consulting

EROWA scanning solutions are configured individually to meet your needs. We are happy to advise you in order for you to find the optimal procedures.

SCANNING

Quick shape and profile capturing

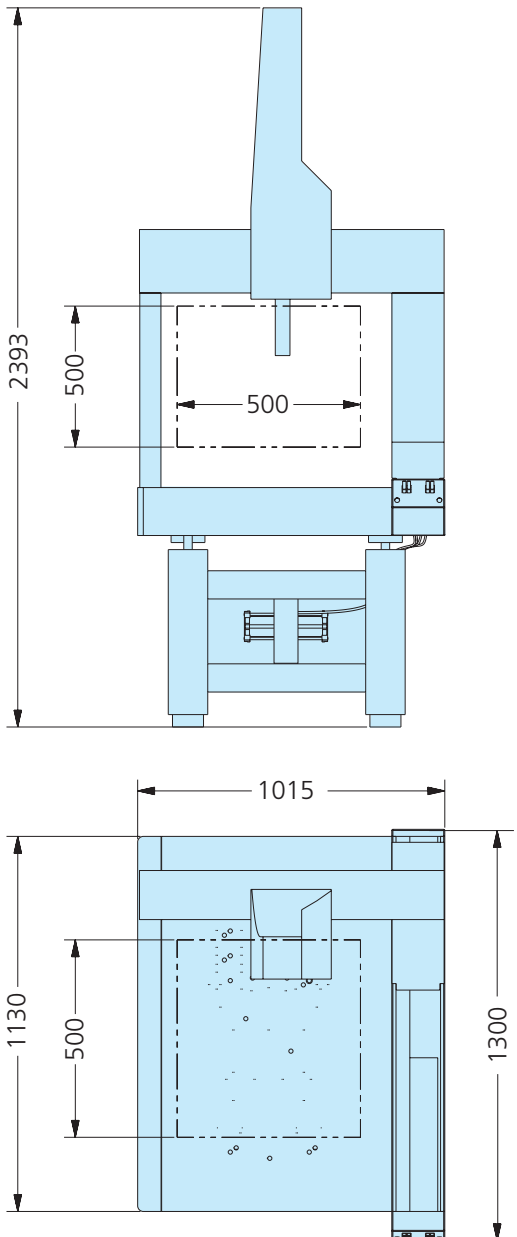
Precise information about dimensional accuracy

Efficient software architecture enabling operators to generate and analyze a maximum of measured data

Easy-to-view target/actual comparisons with CAD (color mapping)

Detailed quality

The EROWA CMM Qi is a CNC measuring machine with 10 key benefits.



TECHNICAL DETAILS

X-axis travel*	500 mm
Y-axis travel*	500 mm
Z-axis travel*	500 mm
Maximum distance between table and probe holder (without probe)	688 mm
Maximum distance between the columns at table height	669 mm
Usable area of the granite slab (with EROWA hole pattern)	669 x 1330 mm
Resolution	0.0005 mm
Measurement uncertainty in the volume (according to ISO 10360/2)	2.2 µm + L/300

Machine dimensions

Dimensions LxWxH	1180 x 1015 x 2393 mm
Maximum loadable workpiece weight	300 kg
Machine weight (no load)	470 kg

Software

Measuring Software	Metrolog X4 / ARCO CAD
PreSet Software	EROWA PreSoft / EROWA PreSet Configurator

* other axis ranges available.



We are happy to advise you personally.
Bring us your workpiece –
together we will develop measuring strategies or special procedures.
Tricky tasks are our specialty – try us.



We offer operator training for quality measurements on site or in one of the EROWA Training Centers.



Measuring equipment must be recalibrated at regular intervals. Our specialists will handle this wherever your machine may be located.



We ensure technical support and troubleshooting worldwide. Our service team is also available by phone.



CONSULTING

For optimal integration of the measuring machine into the manufacturing process

MAINTENANCE

Regular calibration according to ISO 10360-2:2001 by our specialists

FLEXIBLE CUSTOMIZATION

We also develop special procedures and applications for you

The next step

Important things need to be planned. And your next step is certainly among the important things. It is your start into a new, efficient era. We are pleased to be with you on the way. As consultants, in practice. For you to know at all times what you're engaging in. The next EROWA branch office is not far – **take the step.**



USA

EROWA Technology, Inc.
North American Headquarters
2535 South Clearbrook Drive
Arlington Heights, IL 60005
USA
Tel. 847 290 0295
Fax 847 290 0298
e-mail: info@erowa.com
www.erowa.com

Italy

EROWA Tecnologie S.r.l.
Sede Legale e Amministrativa:
Via Alfieri Maserati 48
IT-10095 Grugliasco (TO)
Italy
Tel. 011 9664873
Fax 011 9664875
info@erowa.it
www.erowa.com

Unità di Treviso:
Via Leonardo Da Vinci 8
IT-31020 Villorba (TV)
Italy
Tel. 0422 1627132

Singapore

EROWA South East Asia Pte. Ltd.
56 Kallang Pudding Road
#06-02, HH@Kallang
Singapore 349328
Singapore
Tel. 65 6547 4339
Fax 65 6547 4249
sales.singapore@erowa.com
www.erowa.com

Japan

EROWA Nippon Ltd.
Sibadaimon Sasano Bldg.
2-6-4, Sibadaimon, Minato-ku
105-0012 Tokyo
Japan
Tel. 03 3437 0331
Fax 03 3437 0353
info@erowa.co.jp
www.erowa.com

Switzerland

EROWA AG
Knutwilerstrasse 3
CH-6233 Büron
Switzerland
Tel. 041 935 11 11
Fax 041 935 12 13
info@erowa.com
www.erowa.com

France

EROWA Distribution France Sàrl
PAE Les Glaisins
12, rue du Bulloz
FR-74940 Annecy-le-Vieux
France
Tel. 4 50 64 03 96
Fax 4 50 64 03 49
erowa.france@erowa.com
www.erowa.com

Spain

EROWA Technology Ibérica S.L.
c/Via Trajana 50-56, Nave 18
E-08020 Barcelona
Spain
Tel. 093 265 51 77
Fax 093 244 03 14
erowa.iberica.info@erowa.com
www.erowa.com

China

EROWA Technology (Shanghai) Co., Ltd.
G/F, No. 24 Factory Building House
69 Gui Qing Road (Caohejing Hi-tech Park)
Shanghai 200233, PRC
China
Tel. 021 6485 5028
Fax 021 6485 0119
info@erowa.cn
www.erowa.com

Germany

EROWA System Technologien GmbH
Gewerbegebiet Schwadernmühle
Roßendorfer Straße 1
DE-90556 Cadolzburg/Nbg
Germany
Tel. 09103 7900-0
Fax 09103 7900-10
info@erowa.de
www.erowa.de

Scandinavia

EROWA Technology Scandinavia A/S
Fasanvej 2
DK-5863 Ferritslev Fyn
Denmark
Tel. 65 98 26 00
Fax 65 98 26 06
info.scandinavia@erowa.com
www.erowa.com

Eastern Europe

EROWA Technology Sp. z o.o.
Eastern Europe
ul. Spółdzielcza 37-39
55-080 Kąty Wrocławskie
Poland
Tel. 71 363 5650
Fax 71 363 4970
info@erowa.com.pl
www.erowa.com

India

EROWA Technology (India) Private Limited
No: 6-3-1191/6, Brij Tarang Building
Unit No-3F, 3rd Floor, Greenlands, Begumpet,
Hyderabad 500016 (Telangana)
India
Tel. 040 4013 3639
Fax 040 4013 3630
sales.india@erowa.com
www.erowa.com